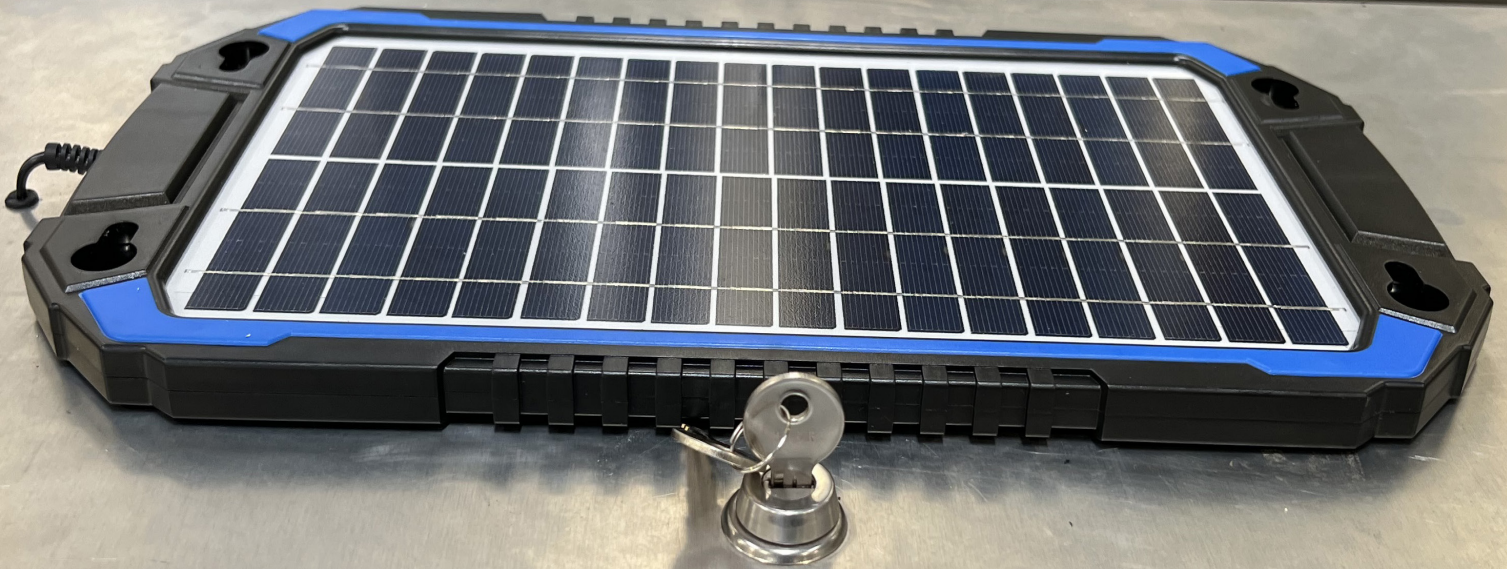




EQUIPMENT TRAILERS

INSTALLATION MANUAL

Solar Panel Kit



TIMPTE

EQUIPMENT TRAILERS

Congratulations on your recent purchase of the TimpTE Equipment Trailer. Here at TimpTE, we take pride in the quality of our trailers and hope your experience with our company meets all expectations and standards. If at any time you experience issues, please do not hesitate to contact your Authorized Dealer for service or the TimpTE warranty department.



This manual contains information and instructions on the installation of our Solar Panel Kit accessory. Please make sure to read this manual prior to beginning the installation and make sure all safety precautions are followed.

Installation Manual:

Solar Panel Kit



Locate your solar panel kit and verify all items are included:

- Solar Panel
- (2) 3/4" bolts
- (2) 1-1/2" bolts
- (4) nuts
- (4) washers
- (2) rubber bumpers
- (4) suction cups
- Electrical components/electrical fasteners



Tools needed to complete installation:

- Drill with 5/16" drill bit
- Wire Cutters
- Phillips Screwdriver
- Tape Measure
- 3/4" Wrench
- Crimping Tool
- Rubber Grommet



Place your solar panel in the middle of the toolbox and measure 11-1/16" from front side of the toolbox.



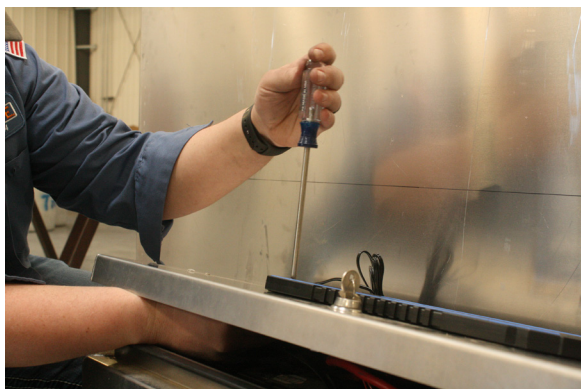
Next, measure approximately 12" from side of toolbox so your solar panel is close to centered. Next, center the solar panel on the lid side-to-side.



Place 5/16" drill bit into the power drill and drill out the four marked holes.



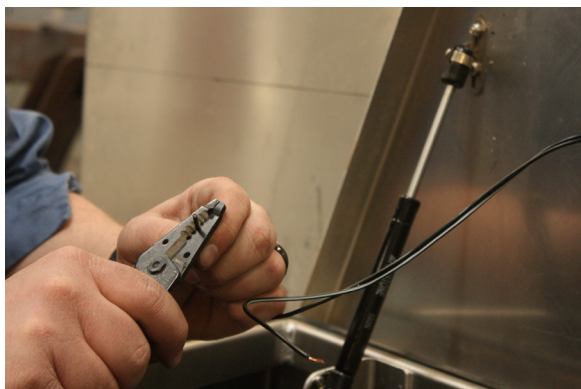
Slide your bolts through from the top side of the toolbox, and place the washers and fasteners onto the four bolts from the bottom side. The 3/4" bolts will be in the two holes toward the front of the toolbox and the 1-1/2" bolts will be toward the rear of the toolbox. Slide the 1-1/2" bolts through the rubber bumpers before sliding bolt through the panel and lid.



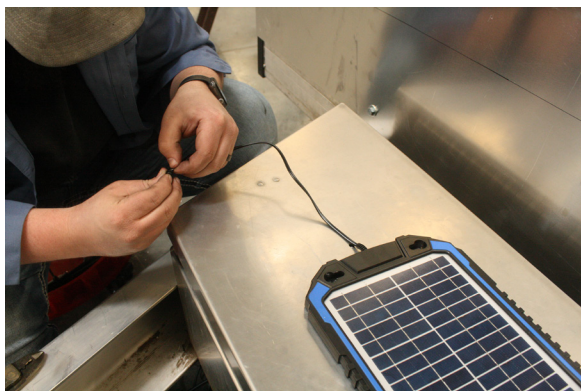
Tighten bolts using your 3/4" wrench and screwdriver until all four bolts are tightly fastened.



Next, 1" from the middle of the cord side of the solar panel drill a hole to thread cord through to the battery.



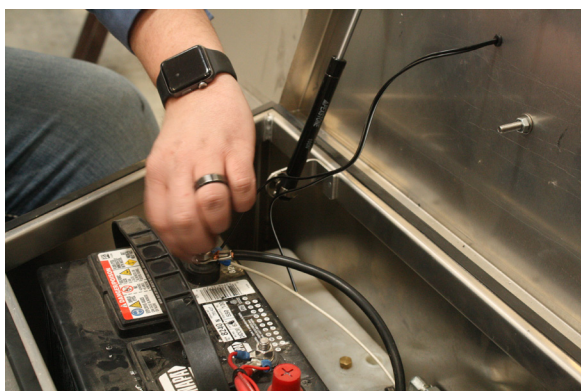
Using your wire cutters, cut the wire from your solar panel to your desired length so it reaches the battery.



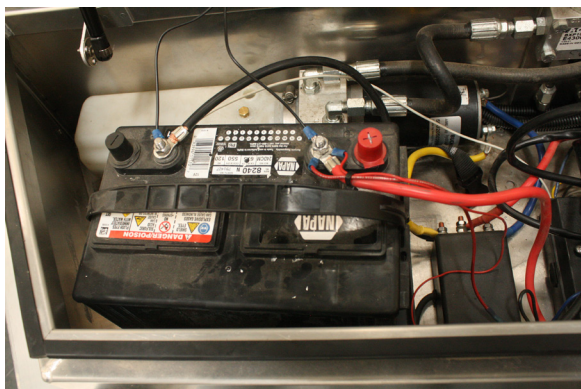
Place rubber grommet over the cut end of the wire and thread it down to the drilled out hole.



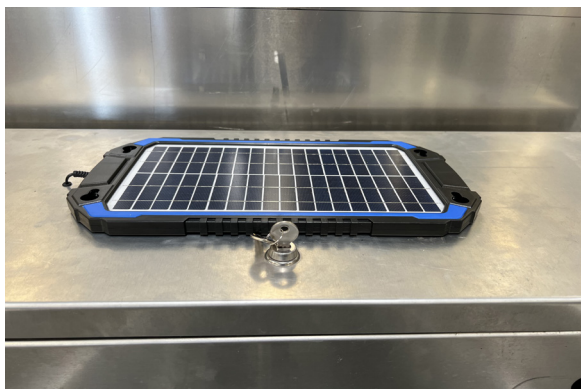
Next, place rubber grommet into the drilled out hole so that no water is able to enter the toolbox.



Using your crimping tool crimp the wire and place electrical connectors to wires. **(Black wire from solar panel leads to negative terminal of battery, red wire leads to positive terminal of battery).**



Next, place electrical connectors onto the electrical studs that are connected to the battery and fasten down.



Once you have fastened connectors to the battery your solar panel kit is complete.



Since 1884